

---

□   □   □

# FOCUS ON FACILITIES

HONORING OUR PAST...SHAPING OUR FUTURE

---

## St. Michael's Catholic Church Duluth, Minnesota



### Presentation/Dialogue Meetings to Review and Discuss Potential Facility Repairs and Improvements

- ❖ **Wednesday    September 11, 2013    7:00 p.m. to 8:45 p.m.**
- ❖ **Thursday        September 12, 2013    9:30 a.m. to 11:15 a.m.**
- ❖ **Sunday            September 15, 2013    6:00 p.m. to 7:45 p.m.**

St. Michael's Catholic Church

4901 East Superior Street • Duluth, MN 55804 • 218-525-1902

[www.stmichaelsduluth.org](http://www.stmichaelsduluth.org) • [office@stmichaelsduluth.org](mailto:office@stmichaelsduluth.org)

**Dear Member of St. Michael's Faith Community,**

We know that our parish is no more defined by buildings than a family is defined by a home. Yet both need a place to live that is welcoming, safe, and comfortable; a place where the light of home can shine. Here in that light, wonderful things can happen, as they have happened in St. Michael's for nearly 100 years.

As every homeowner understands, it is essential that we properly maintain and grow the space needed to shelter our faith community, and offer the ministries to feed the soul of those who consider this their spiritual home. Now at this important moment in our history, we need to work together to find the financial resources to responsibly plan for present and future space needs.

Over the past several months a number of parish volunteers and advisors have worked very hard to investigate how we might repair and improve our facilities to support our ministries.

They have gathered important information, which will tell the story about our parish, and the challenges and opportunities that we presently face. The material will offer a proposed solution to complete urgent repairs, improve accessibility, create a reconfigured church entrance, and other related improvements.

We invite you to review the information provided inside this document, and offer your reactions, input and questions to what we've researched. With broad input from our parishioners, we will be able to implement the most financially sound plan of action to meet the changing and growing needs of our faith community. Thank you!

**Father Tom Radaich**  
Pastor

**Dr. David McKee**  
Trustee

**Gene Bromenshenkel, Chair**  
Facilities Advisory Committee

**Linda Peplinski**  
Trustee

## Table of Contents

Brief Parish History	pages 3-4
Demographics, Sacramental, Education/Youth Enrollment	page 5
Organization and Governance	pages 6-7
Worship and Sacramental Activities	page 8
Religious Education Program	pages 9-10
Lakeside School	pages 11-12
Christian Stewardship	page 13
Time and Talent	page 14
Financial Treasure, Support for the Greater Community	page 15
Operating Budget, Financial Statement	page 16
What Brought Us To This Point?	page 17
Concept Plan for Repairing and Improving Facilities	pages 18-19
Proposed Facility Expansion Architectural Visuals	pages 20-25
Architect's Cost Estimate for Proposed Objectives	page 26
Guiding Principles For A Capital Campaign	page 27
What Kind of Financial Support Will Be Needed?	page 28
Feasibility and Affordability Steps – What Happens Next?	page 29
Important Questions for Consideration	page 30

## Parish Mission Statement

St. Michael's is a Christian Community  
responding to the call to live and celebrate  
the loving word of God in worship and action.

## Our Relationship Built On Faith

### OUR commitment to you as a member of St. Michael's

We, your parish faith community, in celebration of your membership and our faith journey together, promise and commit to you:

- † We will pray regularly and often for you and your needs.
- † We will provide regular opportunities for celebrations of the Mass, sacraments, and other forms of worship.
- † We will provide opportunities for community-building and growth through hospitality gatherings and social activities.
- † We will provide opportunities for spiritual growth and Catholic education for you and all the members of your family.
- † We will provide opportunities for you to use your spiritual and God-given gifts and talents in service to Christ and others.
- † We will be good stewards of your financial contributions.
- † We will hear God's call to financially contribute as a parish and support the needs of others beyond our boundaries through outreach ministry.

### YOUR commitment to St. Michael's faith community

God calls us into relationship with one another. As a parishioner seeking to follow Christ, we invite you to commit with other parishioners to:

- † Pray daily.
- † Express your faith in regular worship at St. Michael's.
- † Discern your God-given gifts and talents and participate in service opportunities at the parish.
- † Share your time ministering in service to others both at the parish and through outreach ministries.
- † Hear God's call to share your treasure and support the ministry needs of parishioners through your financial support.
- † Participate regularly in programs for your own faith formation and encourage/support the programs intended for other family members.
- † Participate in community-life activities and hospitality events for fellowship and growth.
- † Invite and welcome others to share their faith with us.
- † Practice Gospel values in your daily life.

## A Brief Look at Our Parish and Facility History

- 1914... St. Michael's was established and Mass was first offered at the old fire hall at Dodge and 51.
- 1915... Father Michel Boland was appointed pastor for the 45 registered families. Masses were held in the basement of the first church built on 48<sup>th</sup> and Pitt Street.
- 1920... The sanctuary was moved to the main floor of the church. Father Thomas Hennebry was appointed pastor.
- 1921... Father Edmund Walsh became pastor.
- 1922... The interior of the first church was completed and the school opened on the second floor. Grades 1-8 were provided in 4 classrooms for the 72 registered pupils.
- 1923... The Dominican Sisters from Springfield, IL were assigned to staff the school. Father P.J. Maloney was named pastor.
- 1928... Father P.J. O'Brien was appointed the new pastor.
- 1946... Father Michael Hayes became pastor.
- 1955... Groundbreaking for the new church and rectory. The Used-A-Bit shop opened in downtown Duluth.
- 1956... The school expanded to two floors, eight classrooms, and 250 students. Lay teachers joined the Sisters as faculty members.
- 1968... Monsignor Bernard Popesh was appointed pastor.
- 1970... Vatican II changes were initiated, by removing the communion rail and turning the altar to face parish members.
- 1972... Raggedy Ann Preschool opened in the church hall to fund the kindergarten for St. Michael's School, which was held in the house at 4826 Pitt Street.
- 1976... Father Seamus (James) Walsh was named pastor.
- 1978... St. Michael's welcomed members from the closed St. Joseph's Church in Lakewood.
- 1982... Father William Graham was appointed pastor.
- 1984... The church renovation project began. This included: removing the high altar, extending the sanctuary floor, installing Italian quarry tile in the sanctuary and center aisle, building the reconciliation room, moving the statues to the former confessional sites, moving the Baptistry to the rear of the church, installing a sanctuary light from the College of St. Scholastica, installing newly designed stained glass windows in the church proper, tuck pointing the church and rectory buildings. The renovation was completed in 1988 and all repairs/improvements were paid for by gifts to the parish.
- 1985... Gabriel's Second Hand Bookstore opened in the former kindergarten building on Pitt Street.
- 1990... Father William Fider was appointed pastor.
- 1994... The former Lakeside School at 4600 Pitt Street was purchased with generous donations from parishioners. The school was renamed St. Michael's Lakeside School. A Montessorri preschool and grades K-6 served 180 students.

1995... The former school was transformed into the Lakeside Professional Building, with office space for rent.

Gabriel's Second Hand Bookstore was moved to the basement of Lakeside Professional Building. Ornate shelving, salvaged from the former Duluth Carnegie Library was installed.

2000... The rectory and church office windows were replaced.

2005... St. Michael's celebrated the 50<sup>th</sup> anniversary of the 'new' church.

Father Thomas Radaich was named pastor.

2007... Major parts of the roof of St. Michael's Lakeside School were repaired and/or replaced.

Father Noel Stretton came to St. Michael's as senior associate pastor.

2008... Due to diminishing enrollment, St. Michael's Lakeside School eliminated 6<sup>th</sup> grade.

2011... St. Michael's pastoral staff participated in a Ministry Colloquium at St. John's University.

The Duluth Diocese engaged in a year-long process of strategic planning for all parishes. Pastors and parish representatives met by deanery to plan for the future.

2012... Bishop Sirba approved the final Diocesan Strategic Planning Guidelines and published them in The Northern Cross. St. Michael's receives news that there are no future plans for closing or merging the parish.

Father Tom Radaich formed a committee to assess St. Michael's facilities and to make recommendations. Gene Bromenschenkel agreed to chair the committee.

St. Michael's parishioners met to discern the future of its school and, after formation of a task force, developed a five year strategic plan.

2013... Bishop Paul Sirba approved St. Michael's Lakeside School Strategic Plan and work began on a five-year development and enhancement program for the school. Mr. William Van Loh accepts the position of school principal.

Fr. Radaich and representatives of the Buildings and Grounds Committee seek advice and approval from the Diocesan Presbyteral Council to create a conceptual plan for parish facilities. The proposed plan would replace a deteriorating roof, front steps, and build a new elevator and gathering space. Bishop Sirba gave approval to continue the planning process.

Parish holds three presentation/dialogue meetings to inform members of potential repairs and improvements to parish facilities.

## Current St. Michael's Parish Demographics

Parish members include 691 households and 1,906 individuals.

- 4.14% of our members are age five and younger.
  - 5.72% of our members are in Grades 1-6.
  - 7.19% of our members are in Grades 7-12.
  - 10.49% of our members are between the ages of 19 and 25.
  - 15.48% of our members are between the ages of 26 and 35.
  - 8.42% of our members are between the ages of 36 and 45.
  - 12.91% of our members are between the ages of 46 and 55.
  - 13.64% of our members are between the ages of 56 and 65.
  - 16.84% of our members are over the age of 65.
  - 5.35% of our members are of unknown ages.
- ✓ While some households have moved and other members have passed away, in the past five years we registered over 130 new households.
  - ✓ 24 parish families have 31 children in Lakeside Catholic School.
  - ✓ 98 parish families have 118 children and youth in our Religious Education Program.
  - ✓ Nearly 450 parishioners offer time and talent in 42 ministries.
  - ✓ In an average week, excluding weekend worship, nearly 600 children, youth, adults, seniors, and visitors use our parish facilities for a variety of purposes.

## New Registered Households

	2009	2010	2011	2012	2013
† New Registered Households	25	18	35	37	15

## Sacraments Celebrated

	2009	2010	2011	2012	2013
† Infant Baptism	24	31	18	21	11
† Adults received into the Church	6	4	9	4	0
† First Reconciliation/Communion	23	15	16	13	11
† Confirmation	16	27	17	20	TBD
† Marriage	12	11	10	12	5
† Funeral	13	25	15	25	11

## Education Enrollment

	2009	2010	2011	2012	2013
† Lakeside Catholic School	101	97	100	76	64
† Religious Education Program	n/a	n/a	152	146	118



## SCHOOL BOARD

All Catholic Schools in the Diocese of Duluth are required to have in place an Advisory Committee on Catholic Education. The School Board of St. Michael's Lakeside School fulfills that requirement. The School Board's role is to provide guidance to the Pastor and the parish community and to develop policies that will "enable the school to achieve its goals."

The School Board is advisory in nature. It formulates policies and then recommends them to the Principal, who collaborates with the Parish Finance Council, Pastoral Council and other parish governing agencies for approval. One School Board member serves as a member of the Pastoral Council and one member serves as a representative to the Parish Finance Council.

- |                     |              |                           |          |
|---------------------|--------------|---------------------------|----------|
| • Beth Austin       | 349-1370     | • Lynn Peterson           | 525-1098 |
| • Skip Fischer      | 202-215-8077 | • Fr. Tom Radaich         | 525-1902 |
| • Quin Flaig, Chair | 720-0940     | • Bill Van Loh, Principal | 525-1931 |
| • Jill Hess         | 251-3466     | • Jane Van Loh            | 525-1902 |
| • Chris McMahan     | 525-1902     |                           |          |

## BUILDING AND GROUNDS COMMITTEE

The purpose of the Committee is to evaluate, plan and develop options for the necessary major maintenance needs of St. Michael's Church and School facilities and grounds. It develops plans, quotes and bids for major repairs, or remodeling, and general maintenance.

It also recommends to the Pastor, Pastoral and Finance Councils, required and needed major maintenance, with projected costs based on the quotes and bids obtained; and is to be available to provide guidance to the development and completion of major maintenance. Current Buildings and Grounds Committee members are:

- |                             |          |                   |          |
|-----------------------------|----------|-------------------|----------|
| • Keary Bradley             | 940-8633 | • Tom Kozlowski   | 525-5938 |
| • Gene Bromenshenkel, Chair | 525-1185 | • Rob Sawyer      | 525-6210 |
| • Jason Frantz              | 343-7456 | • Paul Travelogue | 525-2553 |
| • Dorothy Harrison          | 525-9290 |                   |          |

## FACILITIES ADVISORY COMMITTEE

The purpose of the Committee is to develop information on the needs and possibilities for improvements including concept plans for St. Michael's Church.

The Committee was charged to review needs as expressed by parishioners over the past years and those presented by the Building and Grounds committee, including accessibility issues, upgrade of restroom facilities and potential improvements to the Church facility.

The information developed and concept architectural plans will be brought as information to the membership of the parish. Facilities Advisory Committee members are:

- |                             |          |                   |          |
|-----------------------------|----------|-------------------|----------|
| • Keary Bradley             | 940-8633 | • Jerry Kimball   | 724-7180 |
| • Gene Bromenshenkel, Chair | 525-1185 | • Chris McMahan   | 525-1902 |
| • Denise Connolly           | 525-1902 | • Bob Newstrom    | 724-2251 |
| • Jason Frantz              | 343-7456 | • Fr. Tom Radaich | 525-1902 |
| • Dorothy Harrison          | 525-9290 | • Rob Sawyer      | 525-6210 |
| • Bob Keyport               | 625-8336 | • Jeff Trentman   | 290-6636 |

## PARISH STAFF – All church staff members can be reached at 525-1902

- Fr. Tom Radaich, Pastor
- Fr. Noel Stretton, Senior Associate Pastor
- Denise Connolly, Administrative Assistant
- Bill Van Loh, St. Michael's Lakeside School Principal 525-1931
- Beth Kaiser, Director of Music, Liturgical Ministries, and RCIA Coordinator
- Chris McMahan, Director of Development
- Jake Nelson, Jr. and Sr. High Religious Education and Youth Ministry Director
- Jane Van Loh, Elementary Religious Education Director

## Worship and Sacramental Activities

The celebration of the Eucharist is at the heart of what truly makes our faith community Catholic. Our time spent at Mass deepens our relationships with God and one another. The celebration of the Mass is enriched by the full and active participation of everyone. Receiving the sacraments is also an essential part of our faith development, linking us closer to our Savior, Jesus Christ.

### Weekend Liturgies

- ✦ Saturday Mass at 5:00 p.m.
- ✦ Sunday Masses at 8:00 a.m. and 10:30 a.m.
- ✦ Sunday Masses at 5:00 p.m. in winter and 6:00 p.m. in summer

### Weekday Liturgies

- ✦ Tuesday and Wednesday Mass at 5:00 p.m.
- ✦ School Mass on Thursday at 10:00 a.m. (during the school year)
- ✦ Friday at Lakeshore at 4:00 p.m.

### LITURGICAL MINISTRIES

For information on any of the liturgical ministries listed, please contact Beth Kaiser 525-1902, ext. 208 or email her at [bethk@stmichaelsduluth.org](mailto:bethk@stmichaelsduluth.org).

**Altar Servers** – assist at the altar during all weekend, Holy Day and Funeral Masses. Students in third grade and higher are invited to serve in this ministry. This ministry is also open to adults. Training and support is provided throughout the year.

**Extraordinary Ministers of Holy Communion** – distribute the Body and Blood of Christ at all weekend and Holy Day Masses. This ministry is open to all fully initiated parishioners. Training and ongoing formation is provided.

**Lectors** – proclaim the Word of God and the Prayer of the Faithful during all weekend and Holy Day Masses. Training and ongoing formation is provided.

**Ministers of Hospitality (Ushers/Greeters)** - this important ministry is currently being developed here at St. Michael's. This ministry entails greeting and welcoming parishioners and guests before all Masses, taking up the offering, bringing the gifts to the altar for the preparation of gifts, distributing the weekly bulletins and cleaning up the church after each Mass. All parishioners are invited to participate in this ministry, which will be scheduled on a rotating basis.

**Music Ministry** – if you have a gift for singing or for playing an instrument, your talents are **needed** and will be **deeply appreciated**. The music during the liturgy enhances all that is being proclaimed by word and action.

**Parish Choir** – The choir provides musical leadership for the 10:30 Mass on Sunday as well as Holy Days and special celebrations. The choir sings a variety of music from chant to contemporary. Rehearsals are on Wednesday evenings, 6:45 p.m.-8:15 p.m., September through May. All men and women, high school age and older are welcome.

**Children's Choir** – "Joyful Noise" singers in grades 1 through 6 are invited to join this choir. This choir sings the 4:00 p.m. Christmas Eve Mass, First Communion celebration in the spring, as well as other times throughout the year.

**Cantors/Song Leaders** – Proclaim the responsorial psalm and lead the assembly in song at the weekend Masses and Holy Days.

**Instrumentalists** – provide instrumental support at our weekend liturgies. Rehearsals depend upon Mass time or the special liturgy being served. Instrumentalists of ANY KIND are welcome!

**Pianists/Organists** – provide musical leadership and accompaniment at our weekend Masses, Holy Days and special celebrations.

## Religious Education Program

Jane Van Loh and Jake Nelson  
Director of Religious Education and Youth Minister (DRE/YM) Team

### ***Children's Liturgy of the Word (PreK through 1<sup>st</sup> grade)***

This is a faith formation program offered during the Sunday morning 10:30 a.m. Mass. During this time, the children go downstairs for hear the Sunday readings presented in language at their level, and participate in games and songs. This program runs during the school year. If you are interested in helping teach the children during Mass or having your children participate, please contact the YM/DRE.

### ***Faith First (2nd-5th)***

The religious education students in 2<sup>nd</sup>-5<sup>th</sup> grades at St. Michael's parish attend class weekly on Sundays from 9:00 a.m. to 10:10 a.m., October through May. Students meet first as a large group and receive lessons from the DRE based on the Sunday lectionary. They are then divided into groups by age and meet with other adult catechists who teach lessons using the *Faith First* curriculum. Two to three times a year we have *Family Fun* events where all the students and their families meet together for a large group social, which includes games, crafts and food. St Christmas the students participate in a service project collecting needed items for a charity.

This year the religious education program combined with the parish and collected for CHUM. Students participate in their own Advent wreath ceremony in December, and Stations of the Cross during Lent. If you are interested in helping teach the children on Sunday evenings, providing snacks, or are available to Sub please contact the YM/DRE.

### ***The Edge (6th-8th) and The Deep (9th-11th)***

These faith formation programs at St. Michael's seeks to meet the youth's need for both religious education AND relationships. We do this through Discipleship Groups. The title comes from the goal to transform our youth into disciples of Jesus Christ.

This program, which is not only working in parishes across the nation, but has worked since Jesus Christ used it, breaks the youth smaller groups divided by gender and grade.

The goal is to have Discipleship Leaders wherein the youth will have a devoted, caring, very well educated (by the YM – Jake Nelson) leader who is available to them and willing to reach into their lives and plant Jesus Christ there.

None of us come to faith by mere information. A head full of the Catechism, or even sacred Scripture for that matter, is neither an answer OR a pre-requisite. It obviously wasn't for our Savior. He sought out men who'd failed at the knowledge section of the exam. He found and called people who were hungry for his answer. And he did it personally.

That is what we are seeking to do with the Discipleship Groups program. We only ask this of you: trust. Trust we have our youth's best intentions prayerfully in mind. Trust that we take our positions very, very seriously, as DRE/YM and Discipleship Leaders (DL's). Trust that God loves your youth more than any of us do and has them in mind each moment.

Finally, trust that "he who began a good work in [your youth] will be faithful to complete it." (Philippians 1:6)

We are looking for people who are available to commit themselves to a discipleship group, hungry to grow spiritually, and teachable (not necessarily knowledgeable, rather willing to learn).

The commitment includes Sunday evenings during the school year, two additional DL training meetings for formation a month, and willingness to pray for your youth daily.

If you are interested in becoming a Discipleship Leader and committing to faithfully transforming our youth through discipleship please contact the DRE/YM.

### **Youth Group**

St Michael's Youth Group meets every Sunday evening (after the 5:00 p.m. Mass), and involves practical instruction for living out the Christian life and insight into the liturgy, group discussions and small group breakouts, time for prayer and meditation, and of course, group games and pizza parties. Our sessions are generally split between Junior and Senior High, although these groups combine for bigger events fairly often.

St. Michael's Youth Group believes that all youth should have the opportunity to encounter Christ in a profound, tangible way. We provide for such opportunities by enabling our youth to build up the community while serving the community, allowing them to encounter Christ in each other and in the less fortunate. Our commitment to social justice and community service, coupled with our emphasis on the Mass and liturgical ministry, provide our students with a practical, well-rounded approach to "being Christ in the world."

<b>St. Michael's Religious Education Program Enrollment</b>			
<b>Program</b>	<b>2011-12</b>	<b>2012-13</b>	<b>2013-14</b>
Grades PreK-5/6	52	51	38
Grades 6-11	100	95	80
<b>Total Students</b>	<b>152</b>	<b>146</b>	<b>118</b>
<b>St. Michael's Religious Education Program Tuition</b>			
<b>Program</b>	<b>Tuition Cost</b>		
Preschool – Grade 1	\$20		
Grade 2/First Communion	\$100		
Grades 3-11	\$50		
Grade 10/Confirmation	\$100		

## St. Michael's Lakeside Catholic School

### Mission and Philosophy

The mission of St. Michael's Lakeside School (SMLS) is to offer children a Catholic vision of the world that is guided by reason, shaped by justice, enriched by beauty and devoted to inquiry. SMLS will provide students educational and faith opportunities that will permeate their lives -- with God, family, school, parish and the world.

It is our philosophy that Catholic Education provides for the education of the whole child including the intellectual, physical, emotional, social, and spiritual growth of the students.

St. Michael's Lakeside School strives to recognize all students as unique gifts made in God's image, redeemed by Christ, and called to an eternal destiny.

We recognize parents as the primary educators and see ourselves as partners in education. As facilitators, we seek to integrate Catholic values into daily living by providing a Christ-centered community of worship, study, work and play. We assist students to make their Catholic faith living, conscious and active. We challenge students at St. Michael's Lakeside School to value themselves, to deepen their relationship with God, to open their hearts to love of neighbor and to build a world community linked by justice.

### Goals and Objectives

1. To provide a spiritual environment where the Word of the Gospel is joined with the Spirit of the Gospel. Word and Spirit are given further meaning through living the Catholic faith in daily activities, community, and service.
2. To promote the intellectual, spiritual, emotional, social and physical development of all students to the extent of their ability.
3. To provide an opportunity for creative and critical thinking in an environment where joy and eagerness for learning, as well as basic concepts and specific skills, are taught.
4. To encourage clergy, parishioners and parents to educate children at the parish school, and to invite them to active participation in the education process.

5. To provide a highly professional and Christian administration and teaching staff to serve as a model of Christian living to our students.
6. To encourage students to experience success so as to develop a positive feeling of self-worth.
7. To provide a safe and wholesome environment for student growth spiritually, emotionally, academically, aesthetically, socially and physically.
8. To offer students the use of facilities, materials and technology that encourage and enhance learning.
9. To promote an awareness of and concern for social justice in today's world.
10. To encourage the use of the school facility as a center for family activities that strengthen the bond between the Lakeside community and the school's administration, clergy, parish, parents, teachers, students and community.
11. To promote on-going educational growth by enriching the staff's professional skills, and by evaluating existing programs.

### School Highlights

- Montessori Preschool – full or half day
- Kindergarten – full or half day
- Grades 1-5
- Busing is available within the Duluth area, according to district guidelines.
- Latchkey provides before and after school daycare from 7:00 a.m. until 5:45 p.m.
- Hot lunch offered daily
- Enrichments programs include music, physical education and Spanish; newly upgraded computer lab and computers in every classroom; private music lessons available in grades 2-5 for an additional fee.
- Girl Scouts offered from kindergarten through grade five.
- Student Council for grades 2-5
- Annual spring musical for grades K-5

**Faith Formation**

Students and teachers participate in Mass on a weekly basis. There is daily religious education instruction and prayer.

<b>Lakeside Catholic School Enrollment</b>					
<b>Grade</b>	<b>2009-10</b>	<b>2010-11</b>	<b>2011-12</b>	<b>2012-13</b>	<b>2013-14</b>
Preschool	38	36	36	30	51
Grades K-5	57	64	40	34	43
<b>Total Enrollment</b>	<b>97</b>	<b>100</b>	<b>76</b>	<b>64</b>	<b>94</b>

<b>Lakeside Catholic School Tuition</b>					
<b>Year</b>	<b>2009-10</b>	<b>2010-11</b>	<b>2011-12</b>	<b>2012-13</b>	<b>2013-14</b>
Preschool ½ Day	\$1,700	\$1,700	\$1,750	\$1,750	\$1,750
Preschool All Day	n/a	n/a	n/a	n/a	\$700/mo.
Grades K-5	\$2,700	\$2,750	\$2,875	\$2,975	\$3,075

**Duluth Area Catholic School System**

From the 2010-11 Diocesan Strategic Planning Process

**Mission**

To ensure that Catholic school education in the Duluth area is viable, justly available, and equitably supported.

**Values** (Core principles of all schools in the system)

- Catholic identity
- Quality Education
- Student success
- Accessibility
- School advancement

**Vision for 2016**

(Where the system wants to be by 2016)

- Catholic identity consistently exemplified in word, worship, and service across the System.
- Effective governance and leadership in the system and all schools.
- Efficient and effective system and school operations.
- Defined standards of excellence in academics and faith formation attained.
- Adequate funding for programs and facilities flowing from all parishes.

## Christian Stewardship – A Personal Decision

### *“Living Our Lives With An Attitude Of Gratitude”*

Faith is a gift from God and we are called to live that faith. Whether we work in classrooms or boardrooms, in small shops or large manufacturers, in the downtown area or a neighboring community, with nails or microchips, are employed or retired, we all have this same common vocation.

We are called to be stewards of the gifts God has bestowed upon us. All of our gifts, talents and resources...our life, faith, family, friends, intellect, will, skills, income and possessions, and the earth itself, are given to us in trust by our powerful and loving God.

Having been given all of this in trust, we must account for how we use our gifts. The choice...to use these gifts to support God's Kingdom on earth...is a choice we must make every day.

We are called to practice Christian stewardship by giving back to God a portion of our time, talent, and treasure through our parish and our community. St. Michael's Catholic Church provides a central focus where we can express our faith in worship and education and demonstrate acts of social justice and charity, offering our time, talent and treasure for the good of others.

Our parish is more than just the building we know as the church. It is here we see the face of Jesus in the Eucharist and on the face of our neighbor. That neighbor might be a homemaker, business leader, a senior citizen or a young child. Perhaps our neighbor is a recent immigrant or a fifth generation American, a young adult struggling with identity and the meaning of life or an older adult with grown children who now lives alone. Whatever the circumstances, we are all called to be Christ to one another.

What is a Christian steward? One who receives God's gifts gratefully, cherishes and tends them in a responsible and accountable manner, shares them in justice with others, and returns them with increase to the Lord.

**Are we living - and giving - as Christians?** This is a personal question we must ask ourselves. In answering this question, we reflect on how we appreciate the gifts God has given us. It is important to remember that we all have gifts from God, and we are called to use our time, talents and financial resources responsibly.

As good managers or stewards, we need to give in response to the gifts God has given us. Our Christian service and financial gifts should not be given on impulse, but out of love of God and neighbor. Our gifts should be given after careful consideration of our time, talents and capacity, and the program and facility needs of our parish.

Scripture says that we should see giving as a joyful act, not as a loss; as an opportunity and not a burden; as an act of love for God and not merely sacrifice. This is a lesson of how to live and is echoed in the teachings of the Second Vatican Council.

These teachings offer us guidance for building God's Kingdom in our community: "... it is a duty and honor for Christians to return to God a portion of the gifts they receive." In the end, we must examine the choices we have made in using our time, talents and financial gifts.

***Stewardship – a personal decision on how we use our resources.***

## Christian Stewardship – Our Time and Talent

Ministries, committees, organizations, and activities that enrich our faith community. These continue to function based on your generous commitment of time and talent.

Altar Servers	Liturgy Commission
Arts and Environment	Ministers of the Word/Lectors
Bazaar/Bingo	Ministry Fair
Bible Study	Music Ministry
Book Club	New Parishioner Welcome
Buildings and Grounds Committee	Office Volunteers
Cantor/Song Leader	Operation Rice Bowl
Charity and Justice Committee	Parish Choir
Children's Choir	Parish Nurse Ministry
Children's Ministry	Pastoral Council
Christmas Tree Sales	Pianist/Organist
Endowment Committee	Prayer Chain
Eucharistic Ministers	Pumpkin Patch
Facilities Advisory Committee	RCIA (Rite of Christian Initiation for Adults)
Finance Council	Religious Education
Flower Gardeners/Garden Club	Religious Education Teachers
Funeral Altar Servers	Scholarship Committee
Funeral Ministry	School Board
Funeral Lunch Providers	Sunday Morning Coffee
Gabriel's Book Store	Used a Bit Shop Workers
Girl Scouts/Brownies	Ushers
Greeters	Young Adult Ministry
Home and School Association	Youth Ministry
Instrumentalists	Welcome Committee
Lectors	

## Christian Stewardship – Our Financial Treasure

### Summary Of January 1, 2012 – December 31, 2012 Calendar Year Envelope Contributions

Annual Giving	Weekly Support	# Households	% Households	Cumulative Total
\$10,001 – above	\$192.32– above	1	.14%	100.00%
\$5,001 – \$10,000	\$96.17 – \$192.30	3	.43%	99.86%
\$4,501 – \$5,000	\$86.55 – \$96.15	2	.29%	99.43%
\$4,001 – \$4,500	\$76.94 – \$86.54	2	.29%	99.14%
\$3,501 – \$4,000	\$67.32 – \$76.92	2	.29%	98.85%
\$3,001 – \$3,500	\$57.71 – \$67.30	3	.43%	98.56%
\$2,501 – \$3,000	\$48.10 – \$57.69	7	1.01%	98.13%
\$2,001 – \$2,500	\$38.48 – \$48.08	14	2.03%	97.12%
\$1,501 – \$2,000	\$28.86 – \$38.46	22	3.18%	95.09%
\$1,001 – \$1,500	\$19.25 – \$28.84	39	5.64%	91.91%
\$801 – \$1,000	\$15.40 – \$19.23	26	3.77%	86.27%
\$601 – \$800	\$11.56 – \$15.38	34	4.92%	82.50%
<b>\$401 – \$600</b>	<b>\$7.71 – \$11.53</b>	<b>46</b>	<b>6.67%</b>	<b>77.58%</b>
\$201 – \$400	\$3.86 – \$7.69	53	7.67%	70.91%
\$101 – \$200	\$1.94 – \$3.84	47	6.80%	63.24%
\$76 – \$100	\$1.46 – \$1.93	20	2.89%	56.44%
\$51 – \$75	\$ .98 – \$1.44	16	2.32%	53.55%
<b>\$26 – \$50</b>	<b>\$ .50 – \$ .96</b>	<b>19</b>	<b>2.75%</b>	<b>51.23%</b>
\$1 – \$25	\$ .01 – \$ .48	32	4.63%	48.48%
<b>Households Without Identified Support</b>		<b>303</b>	<b>43.85%</b>	<b>43.85%</b>

**Total Registered Parish Families 691 100.00%**

Totals include weekly envelopes, personal checks, Easter, Christmas, Holy Day, and electronic giving from registered parishioners and family members (from the same household). The summary does not include cash and non-parishioner contributions given in the collection basket, as these loose gifts cannot be linked to a particular registered household.

*It's up to each of us to examine the chart, locate our contribution level, and determine if we have the financial capacity to increase our support.*

## Our Support For The Greater Community

During the July 1, 2012 through June 30, 2013 fiscal year, \$66,748.27 in contributions were made, (on behalf of the generous parishioners) to the beneficiaries listed below.

Beneficiary	Amount
• United Catholic Appeal/Diocesan Assessment	\$46,440.00
• Catholic Relief Services	\$2,534.41
• Rice Bowl	\$40.00
• Latin America	\$258.00
• Holy Land	\$1,301.86
• Holy Father's Mission	\$470.00
• Mission Sunday	\$378.00
• Retired Religious	\$1,134.00
• Catholic Campaign for Human Development	\$256.00
• Native American and Black Missions	\$263.00
• H.O.P.E.S.	\$403.00
• Shrine Circus	\$45.00
• Gas cards (for those in need)	\$425.00
• AICHO (American Indian Community Housing Organization)	\$2,000.00
• Bethany Crisis Shelter	\$1,000.00
• Community Action Duluth	\$1,000.00
• Damiano Center	\$1,000.00
• Life House	\$1,000.00
• Safe Haven Shelter	\$1,000.00
• Thunderbird	\$1,000.00
• Vine House	\$1,000.00
• Women's Transitional Housing	<u>\$1,000.00</u>
• CHUM (Churches United in Ministry)	<u>\$2,800.00</u>

**Total contributions from July 1, 2012-June 30, 2013 \$66,748.27**

## Operating Budget Summary

Fiscal Year Actual for 2013 and the Budget for 2014

Income	2012-2013 Actual	2013-2014 Budget
Weekly Collections	\$357,014	\$360,000
Special Income -	\$91,819	\$106,500
Capital Campaign Income	\$0	\$31,500
<b>Total General Admin. Income</b>	<b>\$448,833</b>	<b>\$498,000</b>
Youth Ministry Fundraisers	\$0	\$5,000
Liturgy Income (flowers)	\$2,942	\$3,000
Religious Education Fees	\$5,500	\$7,000
Professional Building Rent	\$34,797	\$34,140
Used A Bit Shop Income	\$50,766	\$50,000
St. Michael Lakeside School	\$506,099	\$592,880
<b>Total Income</b>	<b>\$1,048,937</b>	<b>\$1,190,020</b>
<b>Expenses</b>	<b>2012-2013 Actual</b>	<b>2013-2014 Budget</b>
Salaries and Benefits	\$187,831	\$207,435
Purchased Services	\$10,084	\$40,000
Parish Program Expenses	\$167,900	\$140,100
Miscellaneous Expense	\$29,757	\$39,460
Insurance	\$21,517	\$21,700
Operations and Maintenance	\$17,731	\$18,400
Senior Associate Home	\$2,260	\$2,900
Youth Ministry	\$1,450	\$2,800
Rectory	\$13,799	\$14,025
Liturgy	\$10,762	\$14,650
Religious Education	\$2,992	\$8,800
Professional Building	\$24,357	\$27,200
Youth House	\$3,328	\$3,320
Used A Bit	\$15,818	\$15,350
Church Building	\$27,809	\$41,000
St. Michael's Lakeside School	\$507,056	\$592,630
<b>Total Expense</b>	<b><u>\$1,044,451</u></b>	<b><u>\$1,189,770</u></b>
<b>Net Profit/Deficit</b>	<b>(\$4,486)</b>	<b>\$250</b>

## Financial Statement as of June 30, 2013

<b>ASSETS</b>			
Current Assets			
Checking account-North Shore	\$96,315		
North Shore Savings	\$25,428		
<b>Current Assets Total</b>		<b>\$121,743</b>	
Other Assets			
Catholic Aid Assn. Endowment	\$767,081		
American Funds Endowment	\$1,191,272		
North Shore Bank Endowment	\$88,594		
Catholic Aid – Cox Memorial – SMLS	\$11,143		
Wells Fargo Investment	\$13,294		
Catholic Aid – Gagnon Scholarship	\$52,668		
<b>Other Assets Total</b>		<b>\$2,124,052</b>	
Fixed Assets			
Church and rectory	\$8,460,000		
SMLS 4628 Pitt	\$13,206,000		
Pro Building	\$2,832,000		
4926 Pitt	224,000		
4931 Superior Street	\$308,000		
UAB contents	\$6,000		
<b>Fixed Assets Total</b>		<b>* \$25,036,000</b>	
<b>TOTAL ASSETS</b>			<b><u>\$27,281,795</u></b>
<b>LIABILITIES AND FUNDS</b>			
Liabilities			
Trust Accounts			
Elevator Fund	\$25,404		
Funeral Lunch Ladies	\$7,287		
<b>Trust Accounts Total</b>		<b>\$32,691</b>	
School Trust Accounts			
Registration/Activity Fees	\$43,092		
Home and School	\$5,438		
<b>School Trust Accounts Total</b>		<b>\$48,531</b>	
<b>TOTAL LIABILITIES</b>			<b><u>\$81,222</u></b>
<b>Fund Balances</b>			
Fixed Assets Total		\$25,036,000	
Prior Year Parish Fund Balance	\$2,011,278		
Current Income (Loss)	\$153,295		
Parish Fund Balance Total		\$2,164,573	
<b>TOTAL FUNDS</b>			<b><u>\$27,200,573</u></b>
<b>TOTAL LIABILITIES AND FUNDS</b>			<b><u>\$27,281,795</u></b>

\* According to Catholic Mutual Insurance our facility replacement value is: **\$25,036,000**

## What Brought Us to This Point?

Opinions within our church family regarding the need for some major brick and mortar improvements have been murmured for decades.

And these discussions reflect the importance of our church home to be welcoming, safe, comfortable and enduring. At St. Michael's we've had a tradition of parishioner involvement in achieving these goals.

Back in 1987, parishioners came together to assess major maintenance needs of buildings and facilities. Those efforts resulted in the "2001 Fund" which produced a financial goal of \$500,000.

Through those efforts, we successfully completed several large maintenance projects including tuck-pointing of the church and rectory, renovation of the church rest rooms, repair of the former school roof (later the new school roof was replaced) and creating a handicap ramp for the church tower entrance.

In 2007 parishioners completed "Living Our Faith", with the main purpose of community building. It achieved, among other purposes, identifying clear parish goals and coordination of parish committees.

One specific outcome was the need to design a major survey of parishioner interests and attitudes.

The resulting survey was conducted in September-October, 2008. There were 340 completed surveys returned.

One of the four areas of concern expressed by respondents, was to explore ideas on how we can make our social and communal gatherings more responsive to God's word and presence in our everyday lives

One of the questions asked: "what is critical to making the parish vibrant?" 73% responded with "having a sense of community".

Another question asked about physical barriers preventing active parish participation. The majority of respondents indicated "the lack of an elevator and the difficulty of using the stairs".

A number of responses suggesting the need to create more of an atmosphere of community and the need for an elevator were also evident in the survey feedback.

It seems clear that keeping the physical church in solid working condition is vital. But more is needed. Just as important, is nurturing our sense of community through innovative and sensitive design of entrance and gathering spaces.

The following proposed plan demonstrates the importance of listening to parishioner feedback and taking it seriously.

## **A Concept Plan For Meeting Required Physical Repairs and Improvements for St. Michael's**

Over the past several years, the Building and Grounds Committee (and more recently a Facilities Advisory Committee) has listened to parishioner concerns and researched options to repair, improve and upgrade parish facilities to meet current needs. Their summary explanations and recommendations follow. The cost estimates provide a general framework for the expense we will likely incur to complete the work. No firm decisions have been made on either projects or priorities before receiving parishioner feedback.

### **Major Issues identified in the Concept Plan**

The major items defined in the plan are based on research and feedback received over the past several years. They are:

- The church and rectory roof deterioration
- The front entrance (Pitt Street) of the church
- Accessibility to the church and restrooms
- A gathering area to foster hospitality for current and potential members

### **Physical Needs Identified by the Building and Grounds Committee and Facilities Advisory Committee**

#### **The Church and Rectory Roof Condition**

Over the past ten years, the tile roof on the church and rectory has required an increasing amount of repair and tile replacement. Nearly \$20,000 has been spent in the past decade alone. The cost has included lifts and special equipment to complete tile replacement. The tiles themselves are expensive. The Building and Grounds Committee has maintained a vigilance on the roof condition, reviewing and making needed repairs as issues appeared. While maintenance has been completed, the roof tiles continue to crack, break-up and degrade, causing a greater potential for leakage over time.

Two separate hail storms in 2008 also increased the degradation of the tiles. The diocesan insurance program that covers our facilities conducted engineering reviews in 2009 and 2010 (coordinated by our Building and Grounds Committee) to determine the extent of hail damage and to

determine other factors related to the condition of the tiles. The initial review indicated a 20-25% tile damage due to the hail storms. The insurance company determined the second review to be necessary and in mid-2010, stated that the major problem of the roof was the degradation of the tiles, hastened by the hail storm. These two independent firms estimated the life expectancy on the current tiles to be less than five years, when major roof tile failure and potential leakage into the building would occur. Copies of the reports are available upon request.

The Building and Grounds Committee has negotiated with the tile manufacturer, Ludowici Company of Ohio. There was no warranty on the original tiles. They were expected to last 75 years, but the current tiles are just 60 years old, and are breaking and dislodging at a faster rate. Ludowici Company has offered a 15% discount on new tiles if St. Michael's determines that is a product they wish to use.

The Building and Grounds Committee has also negotiated with the insurance company, who has agreed to reimburse the parish \$30,000 when a new roof, or roof repair, is completed.

Several options for repair or replacement have been researched, including asphalt shingles and metal roofing, all with varying life expectancies. The consensus of the Building and Grounds Committee is to replace the roofs with new tile, which has the longest life expectancy (now 75-100 years). The Diocesan Presbyteral Council also recommends the use of tile to maintain consistency with the architectural features of the overall building.

### **Main Entry Steps and Ramp on Pitt Street**

The steps at the main (Pitt Street) entrance have been decaying rapidly and are now nearly unusable. Concrete repairs have tided them over from one year to the next. The stone on the steps is breaking and dislodging from the base.

The Building and Grounds Committee recommends replacing the main entry with a level plaza entrance, which would begin at the Pitt Street/ 49<sup>th</sup> Avenue corner and proceed to the church. This would provide a very accessible entrance for all members and guests. The wide entry plaza also provides an outdoor gathering space (visualize a comfortable outdoor wedding reception line, social gathering after Mass, etc.) The sidewalk corner and church door entrance are comparable elevations, so construction costs are manageable.

### **Create Accessibility to all parts of St. Michael's Church**

Accessibility has been of concern to many parishioners for a number of years. Access to the Church Hall or the restrooms from the Nave (main part of the church) for those members and guests who are disabled or physically impaired is currently not available. The entry ramp from the parking lot to the Church Hall is the only feature that meets ADA (Americans with Disability Act) code. Even the entry at the Pitt Street door is too narrow to allow wheelchair access.

The concept plan proposal includes an elevator located in the vicinity of the main entry to the church. This would provide access to the Nave, the social hall, and restrooms. The approach to the elevator would be through the tower (parking lot) entrance. Our long range planning survey conducted a few years ago indicated a strong support for an elevator to upgrade the access to all church facilities.

Construction of new accessible restrooms is also included in the proposed concept plan. These would be located in the area currently occupied as a small meeting room (formerly the Raggedy Ann Room). This location would allow easy access from the elevator and the northeast stairway.

### **Gathering Area**

In order to foster community at St. Michael's, and to provide a welcoming area for members and guests, the concept plan recommends a gathering space inside the Pitt Street entrance.

This area of approximately 2,000 square feet would allow people to assemble and visit before and after Mass, weddings, funerals, and other events held in the Church. The space creates a venue for smaller social gatherings in an atmosphere of more appropriate scale than the lower level Social Hall. The area would be an extension of the narthex (vestibule) into the nave of the Church.

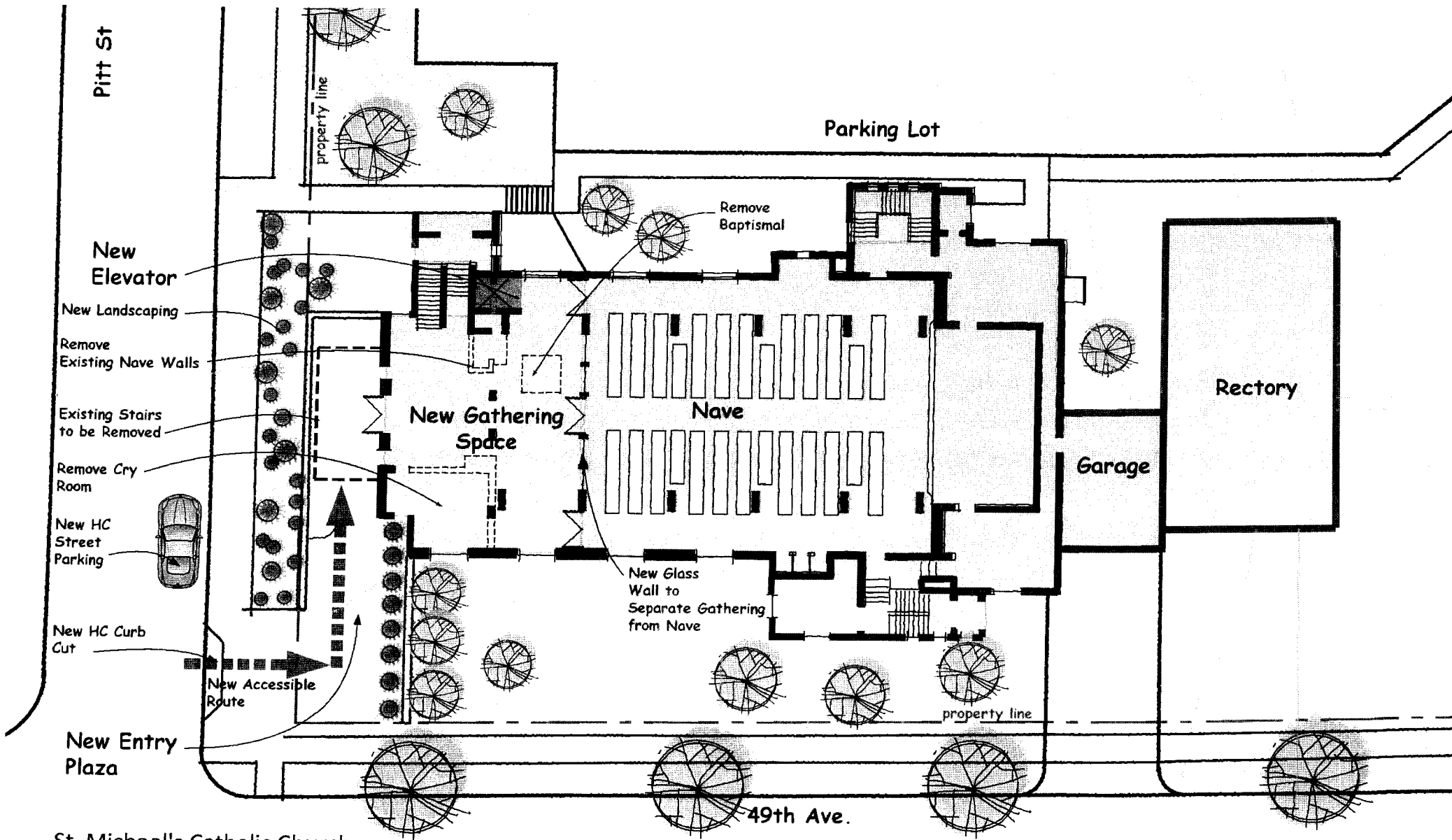
This gathering area, along with the outdoor plaza entry, are the features that most closely honor the results of our 2007 "Living our Faith" effort and the follow-up 2008 parish-wide survey of interests and attitudes. They should promote families and individuals to better know and support each other in both faith and friendship.

### **Summary of Proposal**

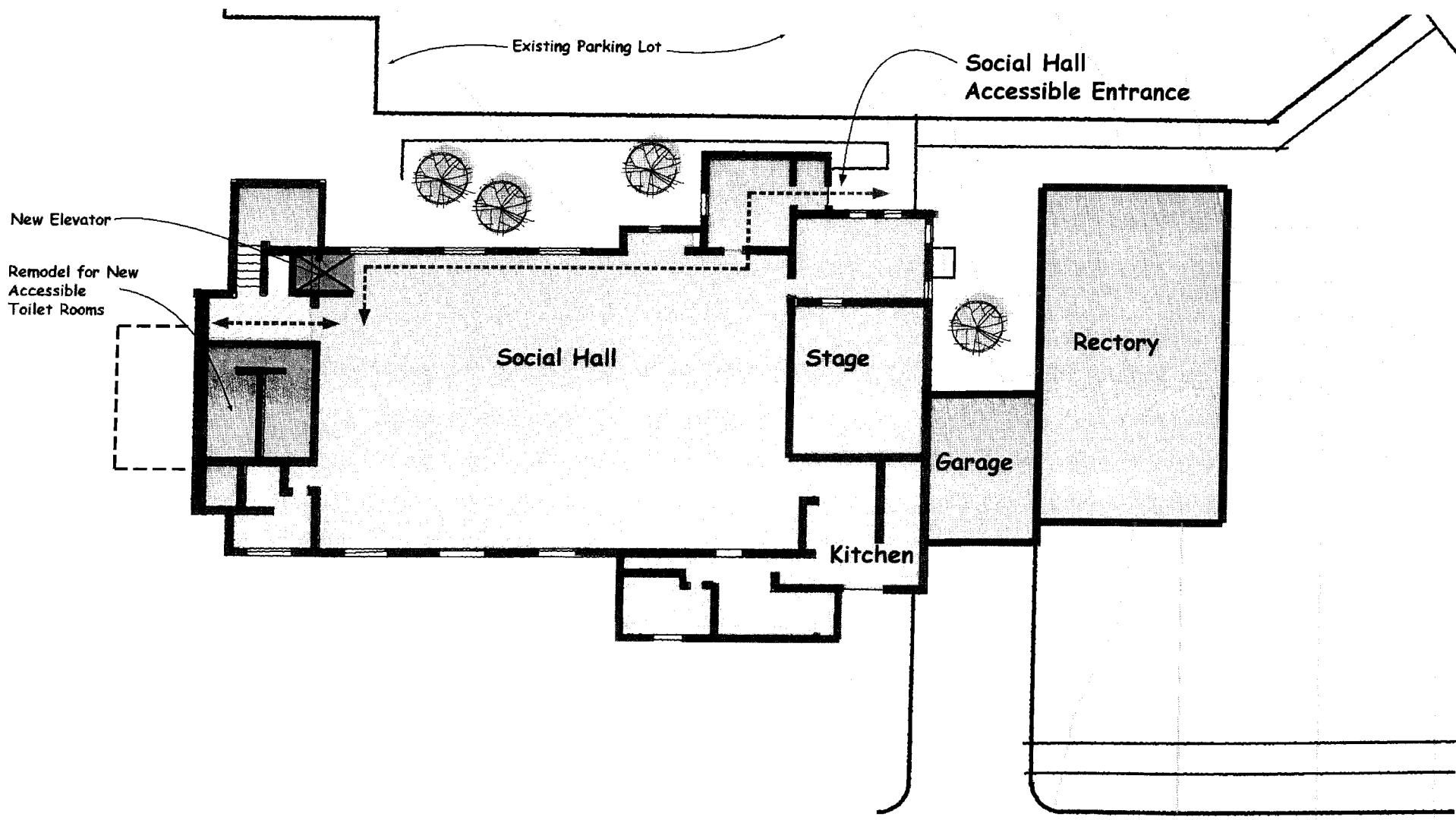
1. Replace the church and rectory roof with a new tile roof; include the addition of insulation to reduce heating costs.
2. Provide an improved access to the church through a plaza approach, which would replace the current front entry steps.
3. Provide an elevator access between floors of the church facility.
4. Provide a 2,000 sq. ft. gathering space at the main entrance of the church.
5. Provide ~~5~~<sup>2</sup> accessible restrooms.

**The total proposed project cost estimate including construction, furnishings, fixtures, equipments, communication and fundraising expenses.**

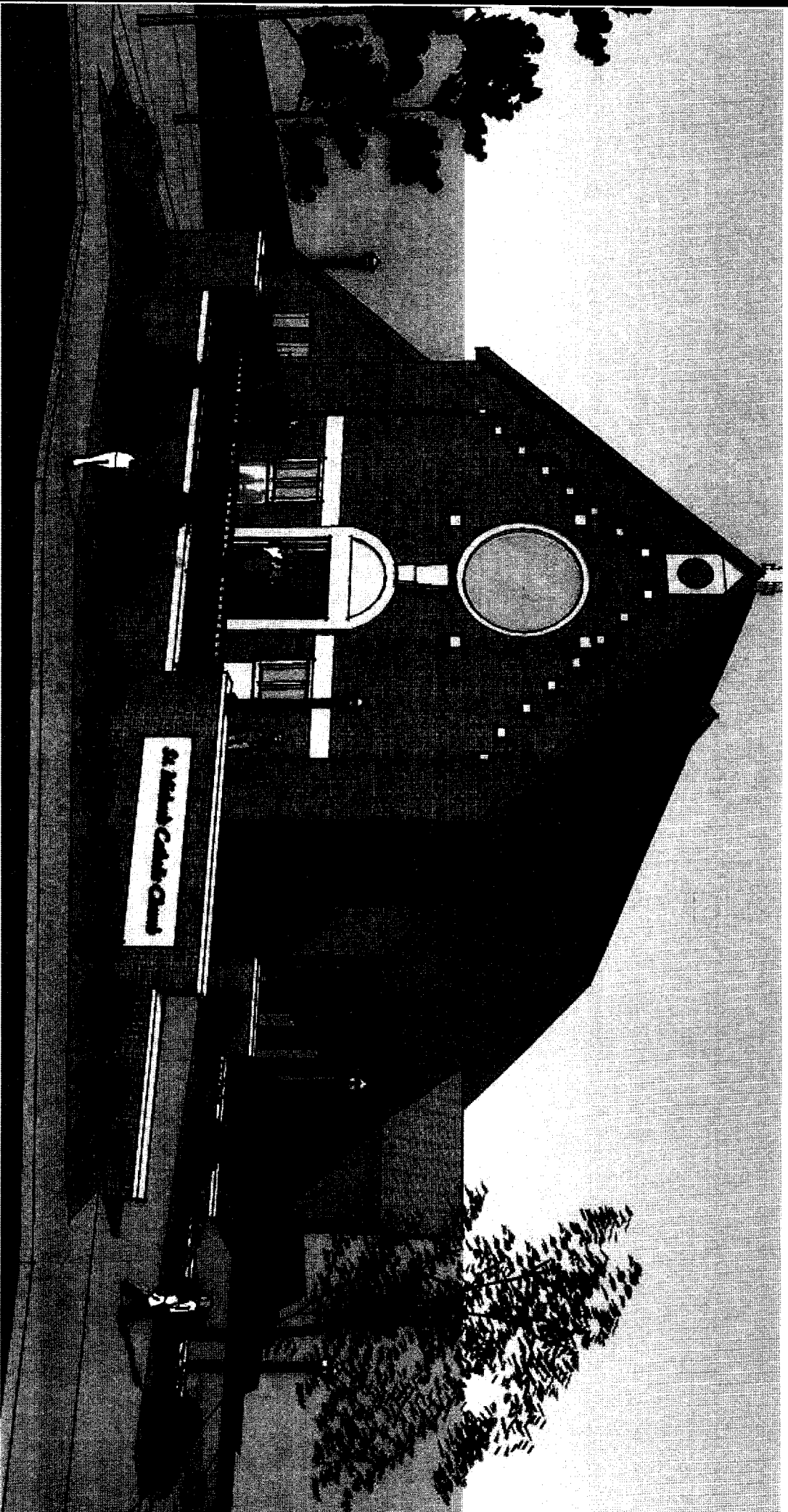
**\$1,143,912**



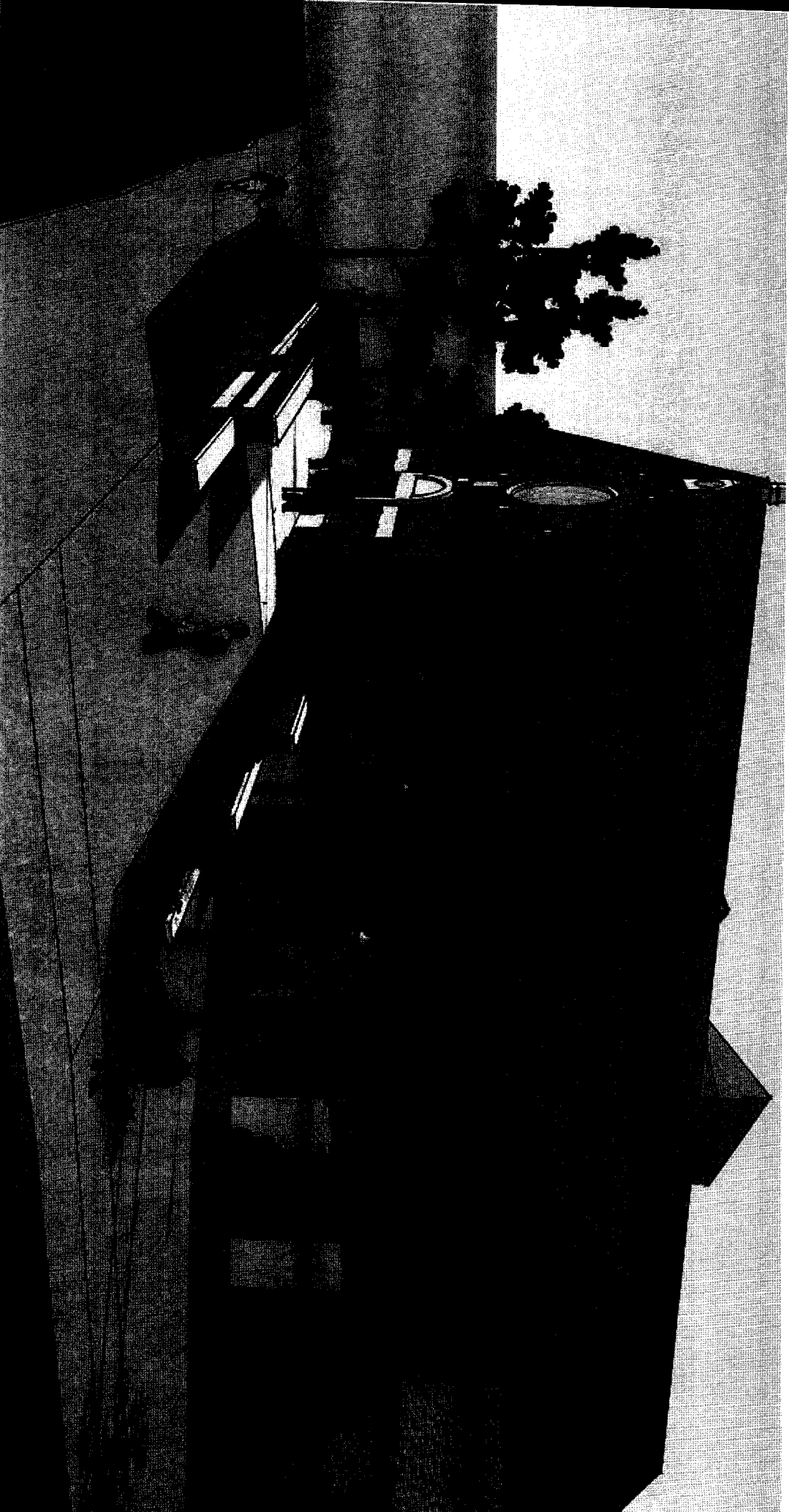
St. Michael's Catholic Church  
Main Level Floor Plan



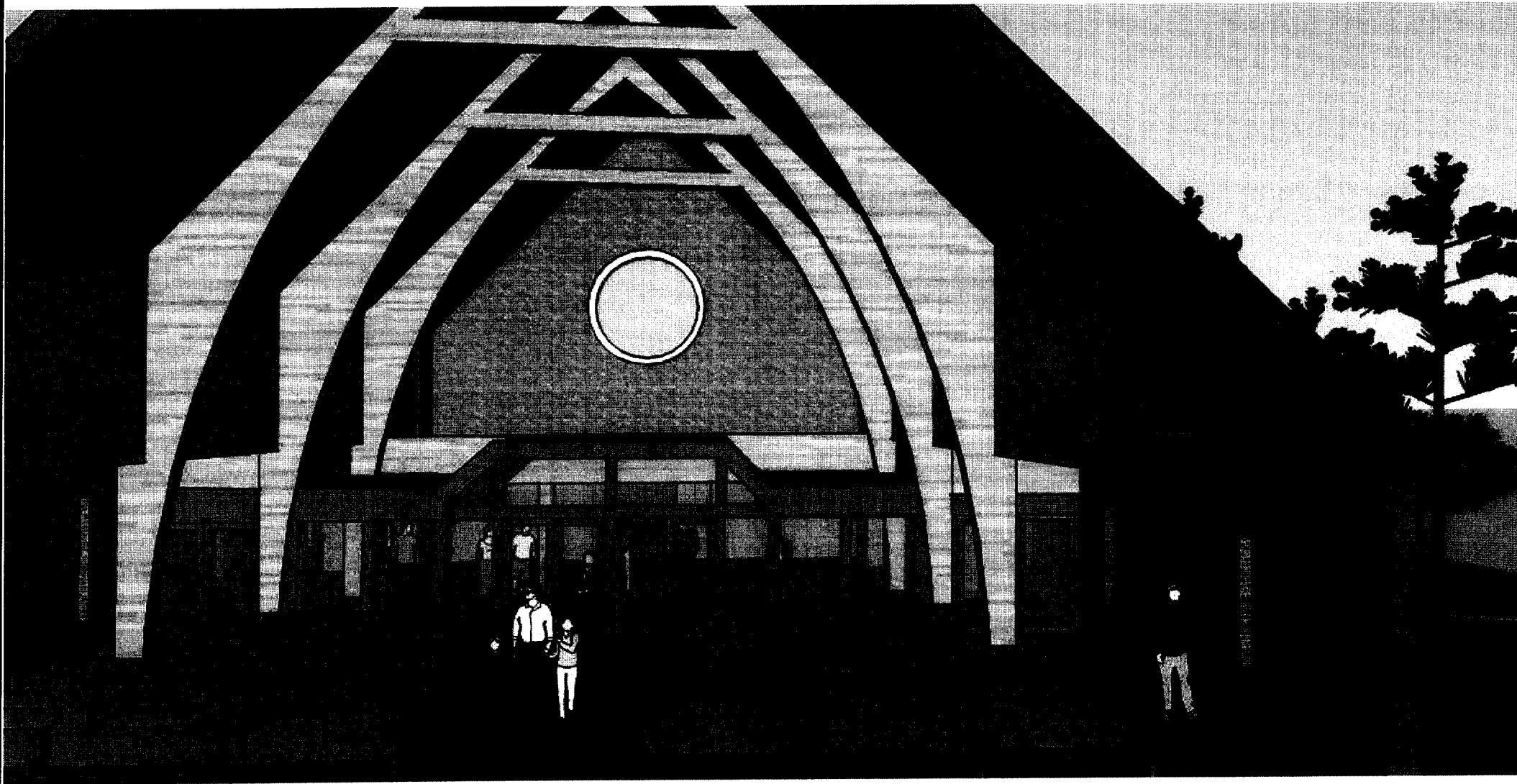
St. Michael's Catholic Church  
Social Hall Level Floor Plan



**St. Michael's Church Concept Design**  
**View from Pitt Street**



**St. Michael's Church Concept Design**  
**View from Corner of 49th Avenue**

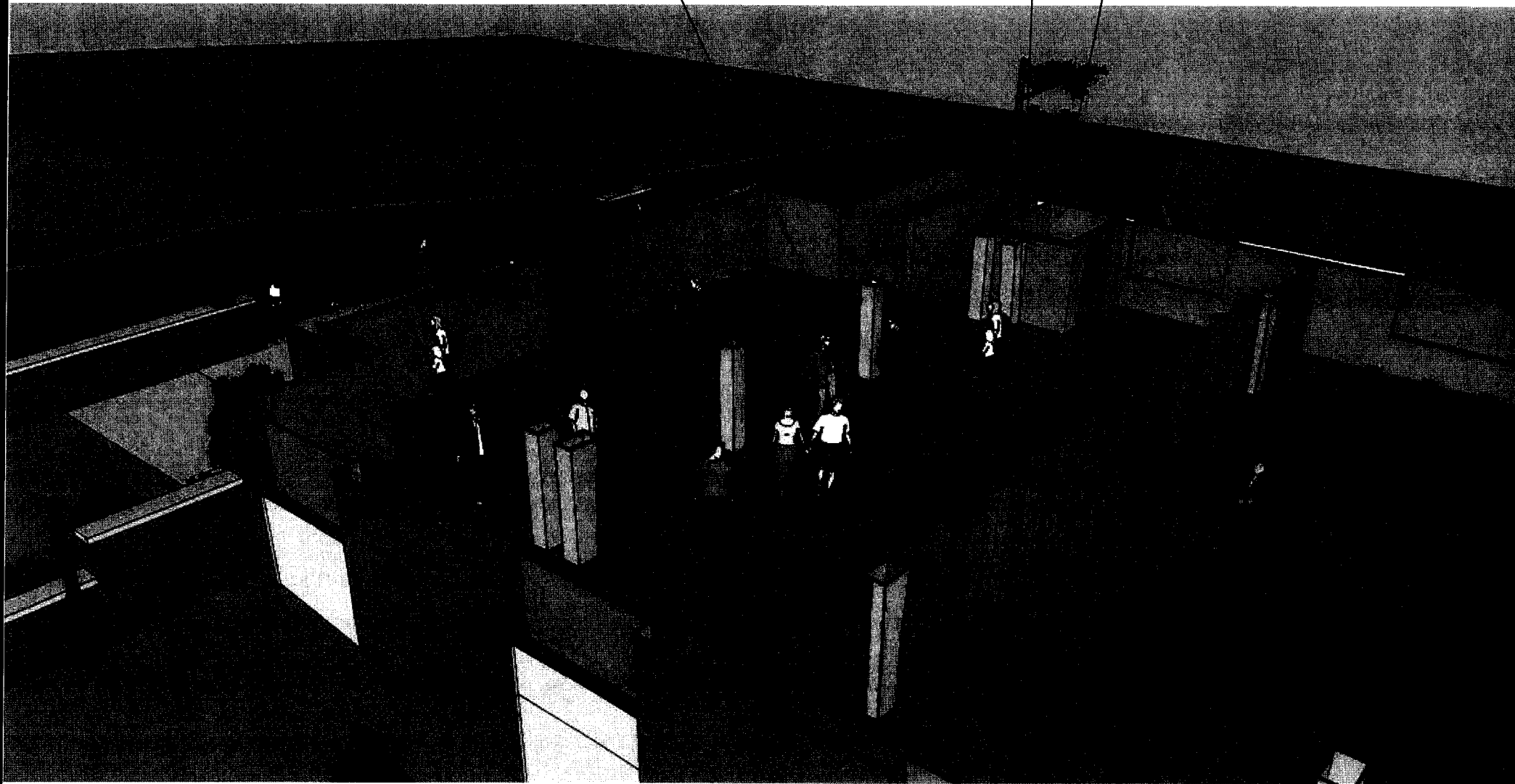


**St. Michael's Church Concept Design**  
**View from Worship Space Towards Gathering Space**

NEW SOCIAL  
GATHERING SPACE

NEW GLASS WALL SEPARATION

NEW ELEVATOR



**St. Michael's Church  
Elevator & Modernization  
PROJECT BUDGET (CONCEPTUAL)**



6/18/2013	2013 Costs	2014 Costs	2015 Costs
Description	Total Cost	Total Cost	Total Cost
<b>CONSTRUCTION BUDGET</b>			
1 New 2 Stop Elevator System (note 1)	\$70,000	\$75,600	\$79,380
2 New ADA Toilet Rooms: M&F	\$40,000	\$43,200	\$45,360
3 New Exterior Plaza (sf)	\$63,000	\$68,040	\$71,442
4 New Exterior Walkways & Landscaping (allowance)	\$35,000	\$37,800	\$39,690
5 Remodel and Enlarge Lobby	\$210,000	\$226,800	\$238,140
6 Misc. Demo & Renovation (allowance)	\$15,000	\$16,200	\$17,010
Sub-Total Construction Budget	\$433,000	\$467,640	\$491,022
7 Roof Replacement	\$500,000	\$540,000	\$567,000
<b>TOTAL BUDGET</b>	<b>\$933,000</b>	<b>\$1,007,640</b>	<b>\$1,058,022</b>

**PROJECT DEVELOPMENT BUDGET**

Design and Construction Contingency	\$43,300	\$46,764	\$49,102
Hazardous Materials Removal Allowance	\$25,000	\$27,000	\$28,350
Architect & Engineering Design Costs	\$34,640	\$37,411	\$39,282
Civil Engineering Design (Site Work)	\$3,500	\$3,780	\$3,969
Financial Consultant	\$30,000	\$32,400	\$34,020
Survey & Construction Testing	\$10,000	\$10,800	\$11,340
Misc. Owner Costs (bldg permit, etc)	\$10,000	\$10,800	\$11,340
<i>sub-total</i>	\$156,440	\$168,955	\$177,403
<b>Total Project Budget</b>	<b>\$1,089,440</b>	<b>\$1,176,595</b>	<b>\$1,235,425</b>

<b>Anticipated Range of Costs = +/- 5%</b>			
<i>low</i>	\$1,034,968	\$1,117,765	\$1,173,654
<i>high</i>	\$1,143,912	\$1,235,425	\$1,297,196

## Guiding Principles IF We Conduct A Campaign

1. Our invitation for financial support would be well organized, dignified, respectful and confidential. **No one will be told what to contribute.**
2. An important objective would be to encourage the full participation of our entire faith community. Everyone has been blessed to some degree and we would invite each to offer a commitment based on their blessings and capacity at this time.
3. As a result, all financial commitments and contributions, regardless of size, would be welcome, needed and appreciated.
4. Commitments and contributions for the capital campaign would be above and beyond regular weekly or monthly support for the annual operating budget, and fees for SMLS School and our religious education programs.
5. All commitments would be acknowledged with a thank you note from Father Tom.
6. Financial commitments would not be legally binding, but rather a moral commitment to St. Michael's Catholic Church. Should the donor's circumstances change and they need to adjust their commitment, they simply need to contact Father Tom to arrange an adjustment.
7. Since St. Michael's Catholic Church is a non-profit 501(c)(3) charitable organization, all contributions would be tax-deductible based on current Federal and State laws.
8. Following IRS guidelines, all contributions of \$250 or more would be acknowledged with a receipt for the donor's tax records.
9. Contributions to the capital campaign would be recorded in your household confidential contribution record and acknowledged at the conclusion of each calendar year in your annual tax summary.
10. In an effort to stimulate a higher percentage of pledge collections, periodic reminders would be mailed to those households who have pledged and have a remaining balance.

### Faith In Our Future

- † We must acknowledge the uncertainty that we are facing right now relative to the general economy. These aren't the best of times, but our faith in Jesus Christ will help us overcome the challenges we face.
- † Previous generations have built our facilities, developed programs and ministries, and guided decisions to provide our worship, education, fellowship, and outreach ministries.
- † We believe it is important to look to the future for inspiration, to meet needs in our community, and to bring the faithful to a closer relationship with God and fellow members.
- † Now we are at an important crossroad. It is now time to do our part to determine what kind of footprints we will leave to properly prepare our facilities for future generations.
- † Let us at least consider the possibilities in order to serve ourselves and those who will join us in the future!

## What Kind Of Financial Support Will Be Needed?

To help our parish demonstrate the affordability to repair and improve its facilities, we would need significant financial support from parishioners. In practical terms, what does "significant financial support" really mean?

The fundraising process creates confusion, particularly with its use of terminology. When we see the words donation, contribution, or commitment, is there a difference? Do they invite the same level of consideration and response?

**Donations** can be considered a response based on what might be immediately available to offer. Examples include a donation of canned goods to a food shelf, a few coins or a dollar bill placed in the red kettle at the mall, or a bag of surplus clothing from our closet. Typically, donations include loose change, cash or items we have readily accessible.

**Contributions** require more thought and often the need to have a record to demonstrate our charitable support. Examples include writing a check to a local charity, purchasing a coupon book to support youth sports activities, or becoming a sustaining member of a community organization. Contributions move the fundraising process to the next level.

**Commitments** require serious and prayerful reflection, not a casual or reactive impulse gift. They demonstrate a willingness to thoughtfully examine our capacity to respond. In most instances a commitment requires a serious leap of faith, trusting that God will take care of our needs. Examples include entering into a marriage, purchasing a home, changing careers, or moving to a new community.

A commitment of this nature requires that we pause from our busy daily lives to seriously consider the lasting impact our response can, and will, demonstrate.

For our parish to complete the proposed facility repairs and improvements, we invite sincere and prayerful financial "commitments" that reflect how St. Michael's Catholic Church impacts our lives and the people near and dear to us.

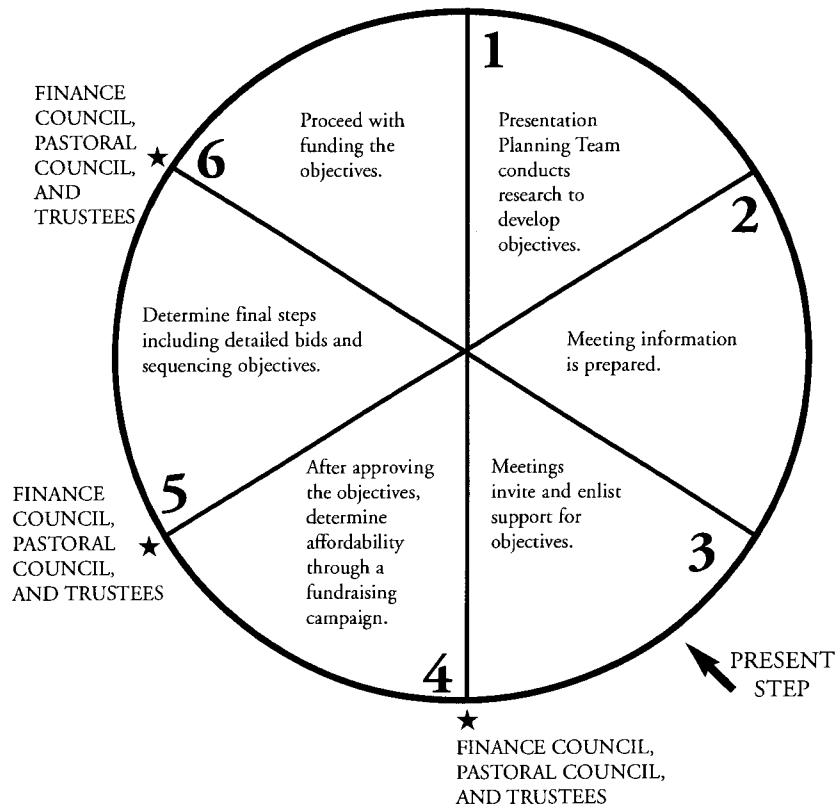
It is possible to consider that commitments of \$20,000...\$25,000...\$50,000...\$100,000 or more could be offered by some parishioners. Others may have the capacity to provide commitments of \$1,500...\$2,000...\$3,000...\$5,000...\$10,000...\$15,000 spread over a 36-month period, helping us to move forward with confidence.

We are all blessed in different ways; therefore, our capacity to respond will reflect commitments that will vary in size. Some of us will consider giving from our assets, while many of us will consider giving weekly or monthly from our income. What is needed is for each of us to consider offering something sacrificial to help this effort.

As we move forward to plan a capital campaign, based on your feedback, one of the overriding principles of our fundraising would be that every household is invited to share from their substance, and respond with a meaningful commitment, based on their capacity. This is a golden opportunity to help those people who will follow in our footsteps.

**How will we choose to let God speak through our actions?** Together, one commitment at a time, we can and will honor our past and shape our future.

**STEPS IN DETERMINING THE  
FEASIBILITY AND AFFORDABILITY  
OF OUR PROPOSED OBJECTIVES**



**What Happens After The Parish Meetings?**

1. After the Presentation/Dialogue meeting, we encourage you to take this document home and thoroughly review it.
2. We urge you to complete the comment sheet and return it to the parish using one of the delivery options listed.
3. If you have a question that a member of the Facilities Advisory Committee (or other parish leaders) might address please list it and ask for a return phone call or email.
4. Our process is designed to have "off ramps" if needed. The first step is to gather and review the feedback from all three parish meetings, the comment sheets and the pulse polls.
5. Parish leadership will then review all feedback received before creating a final action plan.
6. If the consensus, from those who have chosen to participate in the process, is to proceed to raise funds to determine affordability, then we will proceed to plan and conduct a capital campaign.

***"God is able to provide you with every blessing in abundance, so that you may always have enough of everything and may provide in abundance for every good work."*** 2 Corinthians 9:8

## Important Questions For Consideration

### 1. What is our purpose in hosting these Presentation/Dialogue Meetings?

The purpose of these three meetings is to inform parish members of St. Michael's Catholic Church about its mission, history, demographics, programming, finances and the proposal to repair and improve parish facilities. The reactions you share and the direction you provide through your comments and constructive suggestions (whether or not you attended one of the meetings) will help to shape the next steps in this responsible and thoughtful process.

### 2. Why should we consider repairing and improving our facilities?

As individuals and families, periodically we examine our own household space and determine what we need to do by way of repairs and improvements to meet our own family needs. In a similar way, as members of St. Michael's spiritual family, we should do all we can to safeguard and secure the physical space that generations before us created.

### 3. Is this a done deal? Has a decision to proceed already been made?

Far from a done deal or moving on a fast track toward completion, parish leaders have taken a very deliberate and thorough approach to study all of the issues relative to this proposal. They have gathered input from members and volunteer user groups, reviewed practical experiences from other churches, and taken the time to move cautiously through a careful and thoughtful process. The proposed objectives are just that, **proposed**. At this point, there are no firm decisions on proceeding; only the information on the prioritized projects and conservative cost estimates that clearly need your input and direction.

### 4. Is there a projected time line for moving forward?

The first step is to agree what we want to do and then determine if we should proceed with raising funds to complete the proposed repairs and improvements. If the response from members encourages us to move forward with fundraising, then we would launch a capital campaign to personally invite financial support from all members through a well-organized, dignified, respectful and confidential process.

### 5. Why do we need our regular weekly support AND a capital campaign?

When we share our financial gifts on a weekly, monthly, or annual basis through the offertory collection at each Mass, we term this revenue source our annual operating fund. The income derived from our regular contributions provides ongoing support for the day-to-day operation of our parish ministries and programs.

These sacrificial gifts and tithes are given, most often, from individual and/or family annual income, not necessarily assets. To accomplish our mission during the church fiscal year from July 1 through June 30, we need your continued generosity in order for us to maintain the quality of parish life you have come to expect.

When it comes to addressing issues that are outside the scope of day-to-day operations, we must create an additional revenue source. The most conventional approach for our church is to conduct a capital campaign to provide funding for the proposed repairs and improvements.